



Access Statement

for Fashion Museum and Assembly Rooms



This access statement does not contain personal opinions as to our suitability for those with access needs, but aims to describe accurately the facilities and services that we offer all our guests and visitors.

Introduction

Situated 10 minutes' walk away from the Roman Baths Museum and the centre of Bath, the Fashion Museum is a world-class museum collection of historical and contemporary dress. The Museum is located in the Grade I listed Assembly Rooms; the gallery displays showcase original historical fashions for women, men and children from the Museum collection, and dating from the 1600s up to the 2000s. The Assembly Rooms is situated on a slight hill with a gradual approach.

The Museum and Assembly Rooms are based on two floors with stair and lift access to the Fashion Museum galleries on the lower ground floor. You should allow at least one and a half hours to go around the Museum and Rooms using our free audioguide.

You can also enjoy our café and shop selling a range of fashion-related gifts. These are both situated on the ground floor with step-free access.

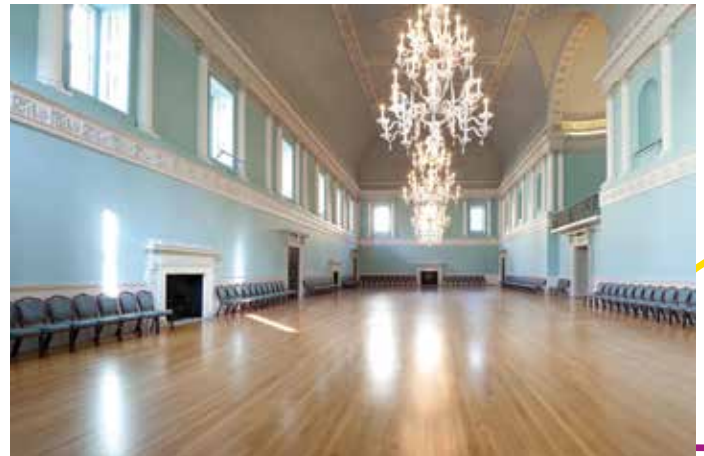
A wheelchair is available for loan free of charge during your visit.

Visitor Services staff are available on hand at the Museum.

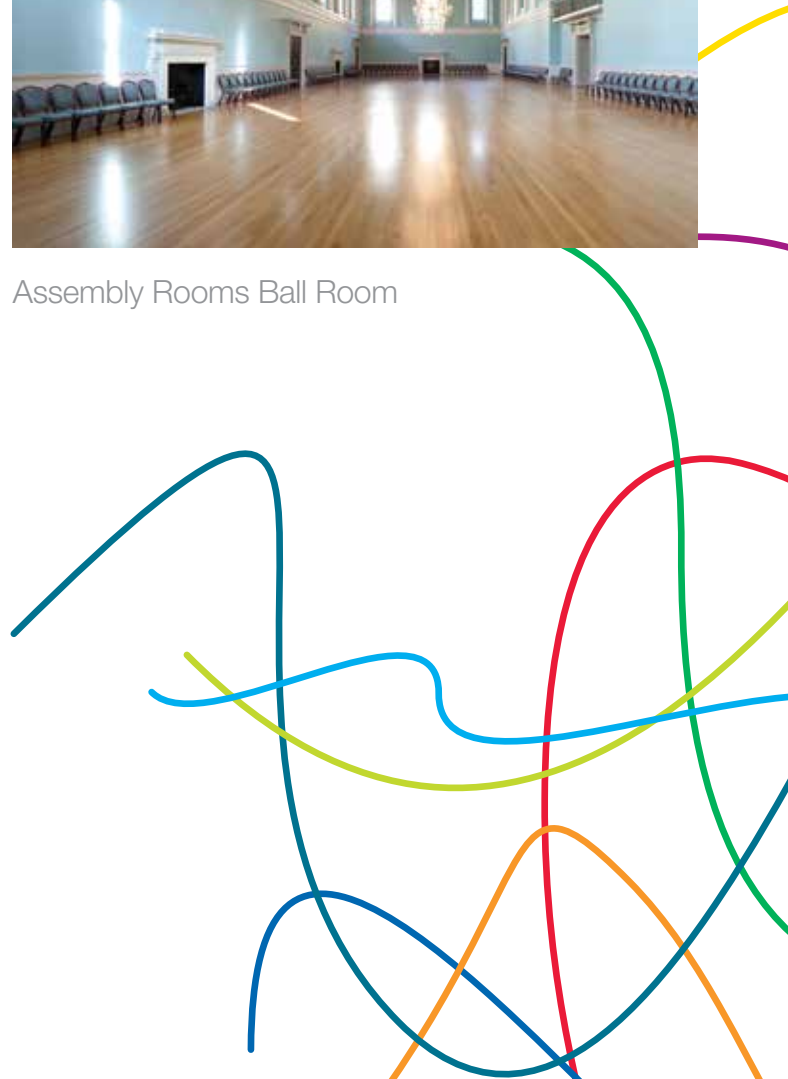
We look forward to welcoming you. If you have any queries or require any assistance please phone 01225 477789 or email fashion_enquiries@bathnes.gov.uk.



Assembly Rooms main entrance



Assembly Rooms Ball Room



Pre-Arrival

- For full details and maps of how to reach us [please see the directions section on our website](#). Alternatively, you can plan your journey by car or public transport using a journey planning website; to get directions, simply enter your postcode and ours, which is BA1 2QH.
- The nearest railway station is Bath Spa, which is approximately 1 mile away (approximately 20 minutes walk). Taxis are available at the station. If you require an accessible taxi you can book this in advance, see contact information for details.
- The nearest airport is Bristol Airport and is approximately an hour's drive away from Bath. The Airport Flyer bus between Bath and Bristol is available 24 hours a day, 7 days a week. At peak times, it leaves up to every 8 minutes.
- Facilities to lock bicycles are available outside the main entrance to the building.
- There are Park and Ride car parks, to the north, south and west of the city. [Full details of Park and Ride services for Bath can be viewed here](#).

Car Parking and Arrival

- There is no on-site car parking at the Fashion Museum and Assembly Rooms, but there are on-street parking facilities reserved for Blue Badge holders on Bennett Street and in the city centre. Blue badges must be displayed at all times.
- The nearest off-site car park is Charlotte Street Car Park and is approximately 10 minutes walk with a slight incline.

Main Entrance, Reception and Ticket Area

- The main entrance and ticket area are situated on the ground floor with step-free, level access, throughout. The entrance doors are 173 cm / 5ft 8 in wide.
- There are some bench seats in this area.
- The floor surface is wood and carpeted.
- The area is even and well lit with overhead lighting from chandeliers.
- Admission tickets to the Fashion Museum include free audioguides and optional guided tours.
- All the public rooms in the Assembly Rooms are fully accessible and include optional guided tours.



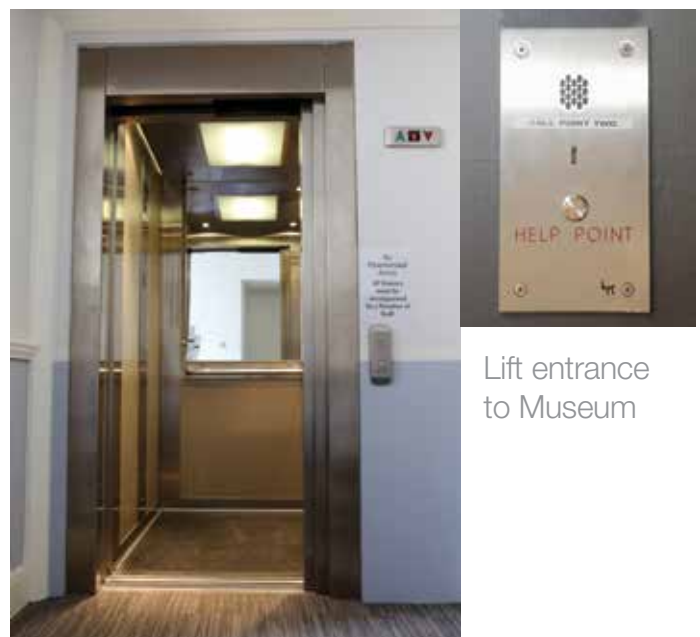
Main entrance

Exhibitions and Assembly Rooms

- A free audioguide in 12 languages is available to guide visitors through the Museum. The languages are: English, Dutch, French, German, Italian, Japanese, Korean, Mandarin, Polish, Portuguese, Russian and Spanish. This has a T switch for hearing aid users. A script is available.
- Every day there are free guided tours of the Fashion Museum by staff. These start at 12:00 and 16:00 and last approximately 30 minutes. Please note there will be occasions when tours are not available.
- Assembly Room Balcony tours are usually available twice a day when the rooms are open to the public. There are 30 stairs involved, and after each set of 6 steps there is a landing. The tours are not suitable for those with mobility difficulties or pushchairs or who suffer with vertigo. Visitors remain behind barriers on each of the three balconies.
- The Museum is on the lower ground floor and is accessible by stairs (one flight with a hand rail) or a lift. Due to the location of the lift, staff accompany visitors when the lift is required.
- Most of the original objects in the Fashion Museum exhibitions are displayed behind glass, in showcases and vitrines.
- The light levels in the Museum galleries are kept low as strong light damages historical dress and textiles.
- There are 'dress-up' clothes for boys and girls, men and women in the Museum galleries. The replica garments – dresses, coats, corsets, bonnets, 'wig-hats' and top hats – are based on originals from the 1700s and 1800s.
- The flooring is carpeted and even and there is ample room in the galleries to manoeuvre a large wheelchair, mobility scooter or pushchair.
- The Assembly Rooms are on the ground floor. The flooring is wood and the rooms are lit by natural light and chandeliers.
- There is seating available throughout the Museum and Assembly Rooms.
- The Museum exit has a single flight of stairs. There are two intercom Call Points in the Museum galleries, one half-way through a visit and one at the exit staircase. These are clearly labelled and can be used to call Visitor Services staff for assistance.



Entrance to Fashion Museum



Lift entrance to Museum



Fashion Museum Galleries

Public Toilets

- Toilets are located on the lower ground floor with stair access from the main entrance.
- Gents are to the right of the main entrance and Ladies to the left.
- A unisex accessible toilet is located on the ground floor with level access from the main entrance. It contains baby changing facilities.
- There is also a unisex accessible toilet on the lower ground floor in the Fashion Museum. It also contains baby changing facilities.
- The flooring is non-slip laminate.
- The unisex accessible toilets have a support rail, a basin with lever style taps, and an emergency-style pull cord.



Catering

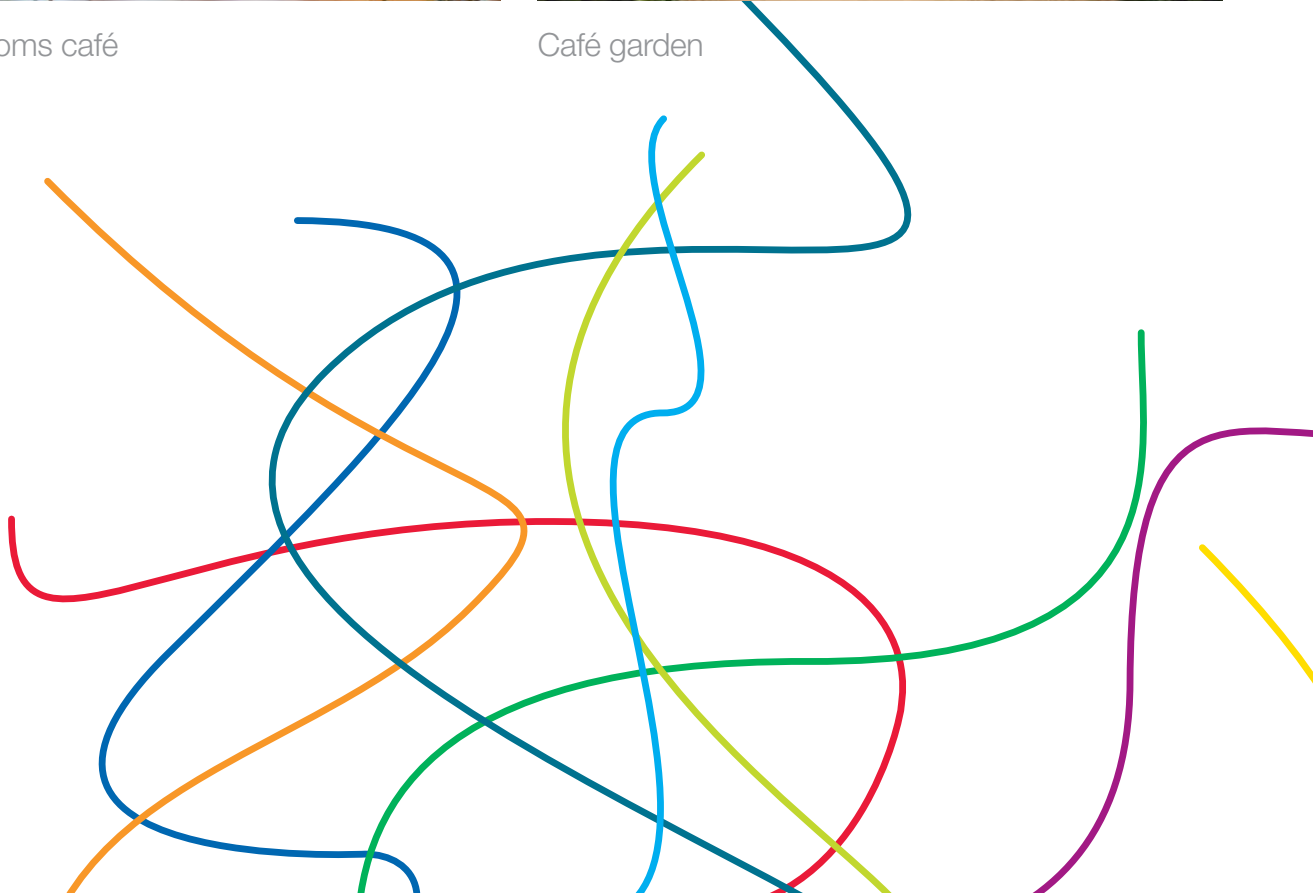
- The café is on the ground floor at the back of the Assembly Rooms and has step-free level access from the entrance.
- The entrance doors to the café are 144cm/4ft 9ins wide.
- Tables in the café are well spaced. The chairs are without arms.
- Lighting in all areas is natural daylight supplemented by overhead lighting.
- The flooring in the café is wood.
- We do our best to cater for any dietary requirements; please speak to a member of the café staff or call us in advance on 01225 444477 to check any specific requests you may have.
- High chairs are available.
- The café is self-service; however, staff can assist on request.
- The garden area is open to visitors when weather permits and has a gravel surface.



Assembly Rooms café



Café garden





Fashion Museum shop

Shop

- There is a shop with a range of fashion-related gifts and books, which can be accessed directly from the main entrance/ticketing area and when exiting the exhibition galleries.
- There are two sets of manual glass doors to the shop, both are 125 cm/ 4ft 2ins wide. They are usually kept open.
- The shop is level throughout, with a wooden floor.
- A low level desk and counter are provided.
- There is ample room within the shop for a large wheelchair to manoeuvre and turn.
- There are tall display racks and low tables accessible from a seated position.
- There is background music.
- The counter has a hearing loop system and staff have been trained in its use.
- Staff can offer assistance if required.

Additional Information

- All of our staff receive regular training that includes disability awareness training.
- We have a set of evacuation procedures – should you require it, someone will assist you with evacuation, either out of the building or to a refuge. We have safe lifts and evacuation chairs to assist.
- Assistance dogs are welcome and water can be provided upon request.
- All our information brochures, evacuation procedures etc. can be made available in large print upon request.
- A First Aider is always available on site.
- Coat rails are provided, however there is no storage available for bags or luggage.
- If you are attending the Fashion Museum for an event or to visit the Study Facilities, please contact the museum on 01225 477789 or fashion_enquiries@bathnes.gov.uk to discuss your accessibility needs.

Future Plans

- Updates about events and exhibitions can be found on our website www.fashionmuseum.co.uk

Contact Information

Address

The Fashion Museum and Assembly Rooms
Bennett Street
Bath
BA1 2QH

Telephone

01225 477789

Email

fashion_enquiries@bathnes.gov.uk

 [fashionmuseum](#)

 [@fashion_museum](#)

Website

www.fashionmuseum.co.uk

Hours Of Operation

Jan – Feb 10.30 – 17.00 last entry 16.00

Mar – Oct 10.30 – 18.00 last entry 17.00

Nov – Dec 10.30 – 17.00 last entry 16.00

Local Accessible Taxi

Accessible taxi services operate throughout the city.

These include Abbey Taxis 01225 444444 and Bath Spa Taxis 01225 313131